

## Things You Should Know



Be prepared for mess! Not all rabbits are litter trained (particularly babies) and hay tends to get everywhere!



Rabbits like to chew! We can advise on rabbit proofing your home, but they may still chew on your furniture or skirting boards. If you are very house proud, bunnies aren't for you!



Be prepared for heartache. Sadly we don't always have happy endings with our animals due to the horrible circumstances that they are rescued from. Whilst it is rare, loss does happen and we want you to be aware that being a foster carer can be tough.



If you are in rented property you will need written permission from your landlord to have animals in your home.



Rabbits can carry a parasite commonly known as E.Cuniculi. This can affect people with severely compromised immune systems, such as A.I.D.S. People with normal immune systems will be fine.

E. Cuniculi can also be passed on to other rabbits through spores excreted in their urine. It is thought that 50% of rabbits are carriers at anyone time but only 12% of rabbits exhibit any ill affect from it. In only 1-2% of cases does it prove fatal.

For more information visit:

[http://www.rabbitwelfare.co.uk/pdfs/Ecuniculi\\_Lft.pdf](http://www.rabbitwelfare.co.uk/pdfs/Ecuniculi_Lft.pdf)



## What Next?

If you meet our requirements and would like to apply to be a foster carer please get in touch.

We will ask you to complete a volunteer application form and then one of our team will pop round to meet you in your home. If the home assessment goes well then you will be supplied with your fostering kit and support information.



### RSPCA Manchester & Salford Branch

565 Wilbraham Road, Chorlton

Manchester, M21 0AE

0161 882 0680

[rspcamcr\\_salford@btconnect.com](mailto:rspcamcr_salford@btconnect.com)

[www.rspca-manchesterandsalford.org.uk](http://www.rspca-manchesterandsalford.org.uk)

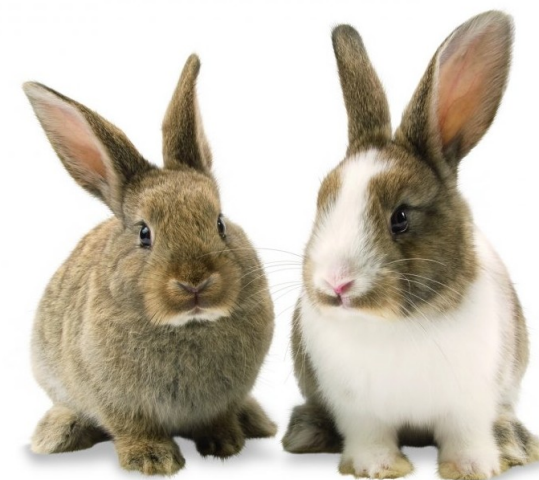
Find us on Facebook & Twitter!



RSPCA Manchester  
& Salford Branch

Registered Charity No. 232255

## Guide to Rabbit Fostering



What is fostering, fostering requirements  
& our commitment to you

## Who Are We?

There are 165 local branches of the RSPCA in England and Wales. We are all independent, registered charities responsible for raising money to fund our work.

The role of a branch is to support the National RSPCA by rehabilitating and rehoming the animals that are rescued by them. 100% of the animals the **RSPCA Manchester & Salford Branch** care for come via the National RSPCA having been rescued from cruelty, neglect and abandonment. This means all our time, effort and resources are dedicated to the neediest of society's animals.

At our branch we use a network of foster carers and two private boarding facilities to help us care for and rehome our animals. Because we do not have our own animal centre our volunteers play a vital role in enabling us to help over 400 animals each year find a second chance of happiness.

## What is Fostering?

Fostering refers to the temporary care of an animal. We place animals in foster homes when they require a period of time to recover from their past experiences.

**With rabbits there are two reasons why they need fostering:**

**1. Rabbits are commonly removed from dreadful conditions** having been confined to a small hutch for a very long time. These animals often require a month or so in foster care to increase their weight, improve their eating habits and to be gradually introduced to exercise in order to build up their muscle tone.











**2. We prefer to raise baby rabbits in a home environment** so they can be socialised from an early age, get used to being handled and also acclimatise to common sights and sounds they will encounter once they are adopted.



## Who We Need

**To foster for us we need people who:**

-  Have experience of caring for rescued rabbits, whether they be owned or fostered.
-  Have experience of giving rabbits medication and have nursed rabbits through ill health.
-  Have a suitable space **inside the home** for the rabbit to live in, i.e. a spare room or space that can be cordoned off.
-  Have the ability to keep the foster rabbit separate from any other animals in the home.
-  Have all existing animals in the home neutered and vaccinated, where applicable.
-  Are willing to comply with our programme of care.
-  Are available at some point during office hours, Monday to Friday, to enable RSPCA staff to deliver/collect the animal and supplies.
-  Live in South Manchester or Salford.

## Our Commitment to You

**We will help you to care for your foster animal by:**

-  Providing all the equipment that you need, e.g. play pen, litter trays, newspaper, hay, veg and enrichment.
-  Transporting the foster rabbit to and from the vets during office hours and (where possible) outside these hours too.
-  Pay for all veterinary treatment the foster rabbit requires.
-  Pay for all food, unless you are willing to do this.
-  We will be here to support you whenever you need us at both evenings and weekends.



## Why Foster?

Temporarily caring for a rescued animal and seeing it develop in vitality and confidence is incredibly rewarding. Although changes can be small and slow coming, knowing that it is down to your patience, compassion and care is highly motivating.

Whilst it can be very hard to let your foster animal move on for rehoming, there is no better feeling than seeing them happy and settled in their new home. Your contribution to fostering can often be the difference between life and death and you can't put a price on that!

